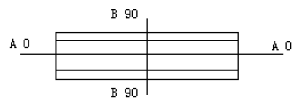
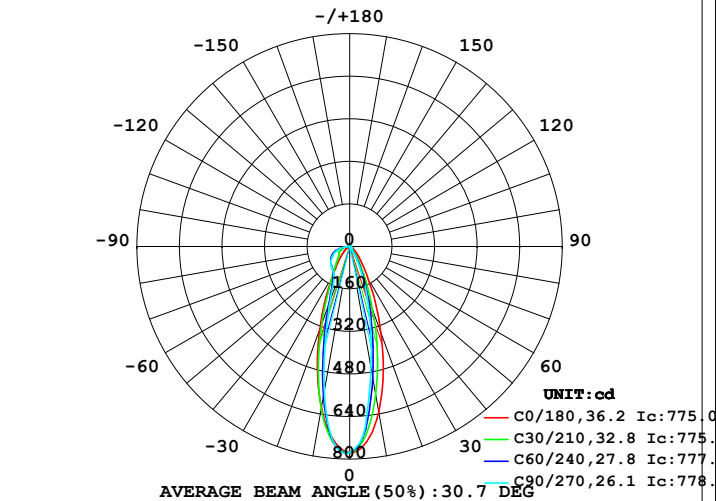


LUMINAIRE PHOTOMETRIC TEST REPORT

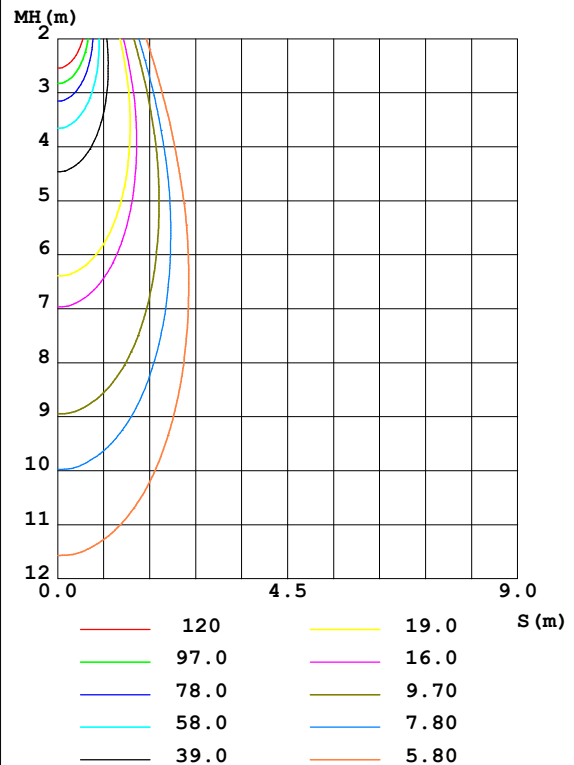
Test:U:225.2V I:0.0510A P:10.60W PF:0.9210 Freq:50.00Hz Lamp Flux:407.534x1 lm					
NAME: REG2075RW-11G40-S		TYPE:		WEIGHT:	
SPEC.:		DIM.:		SERIAL No.:	
MFR.:		SUR.:66		Shielding Angle:	

DATA OF LAMP		PHOTOMETRIC DATA				Eff: 38.45 lm/W
MODEL	4000K CRI90	I _{max} (cd)	778.3	S/MH (C0/180)	0.58	
NOMINAL POWER (W)	10	LOR (%)	100.0	S/MH (C90/270)	0.47	
RATED VOLTAGE (V)	226	TOTAL FLUX (lm)	407.53	η UP, DN (C0-180)	0.0, 33.3	
NOMINAL FLUX (lm)	407.534	CIE CLASS	DIRECT	η UP, DN (C180-360)	0.0, 66.7	
LAMPS INSIDE	1	η up (%)	0.0	CIBSE SHR NOM	0.50	
TEST VOLTAGE (V)	225.2	η down (%)	100.0	CIBSE SHR MAX	0.50	

LUMINOUS INTENSITY DISTRIBUTION DIAGRAM



C0 PLANE ISOLUX DIAGRAM (UNIT:lx)



C Range: 0 - 360DEG
 C Interval: 15.0DEG
 Test Speed: HIGH
 Temperature: 25.3DEG
 Operators: BingYu
 Test Date: 2019-11-21

γ Range: 0 - 180DEG
 γ Interval: 1.0DEG
 Test System: EVERFINE GO-2000B_V1 SYSTEM V2.0.265
 Humidity: 65.0%
 Test Distance: 7.240m [K=1.0000]
 Remarks:

ZONAL FLUX DIAGRAM

ZONAL FLUX DIAGRAM:

γ	C0	C45	C90	C135	C180	C225	C270	C315	γ	Φ zone	Φ total	%lum, lamp
10	631.8	538.2	464.0	529.5	615.5	590.0	551.7	615.3	0- 10	63.56	63.56	15.6,15.6
20	344.3	222.6	183.9	212.4	329.1	260.4	214.3	287.1	10- 20	109.7	173.2	42.5,42.5
30	139.1	66.91	46.18	61.70	131.6	126.4	119.9	130.1	20- 30	75.35	248.6	61,61
40	57.35	17.24	8.814	16.60	56.66	95.00	105.3	90.85	30- 40	45.83	294.4	72.2,72.2
50	25.58	5.282	3.380	5.301	25.71	80.28	92.55	73.64	40- 50	34.85	329.2	80.8,80.8
60	12.05	0.6870	0.2313	0.1474	13.15	77.75	75.14	81.76	50- 60	30.33	359.6	88.2,88.2
70	4.382	0.1369	0.6281	0.0120	4.246	56.01	54.77	52.46	60- 70	26.94	386.5	94.8,94.8
80	1.002	0.3247	0.4891	0.2352	1.147	27.54	25.80	28.14	70- 80	16.93	403.4	99,99
90	0.3361	0.6181	0.9036	0.6231	0.1603	0.1682	0.0783	0.1681	80- 90	4.074	407.5	100,100
100	0	0	0	0	0	0	0	0	90-100	0.0210	407.5	100,100
110	0	0	0	0	0	0	0	0	100-110	0	407.5	100,100
120	0	0	0	0	0	0	0	0	110-120	0	407.5	100,100
130	0	0	0	0	0	0	0	0	120-130	0	407.5	100,100
140	0	0	0	0	0	0	0	0	130-140	0	407.5	100,100
150	0	0	0	0	0	0	0	0	140-150	0	407.5	100,100
160	0	0	0	0	0	0	0	0	150-160	0	407.5	100,100
170	0	0	0	0	0	0	0	0	160-170	0	407.5	100,100
180	0	0	0	0	0	0	0	0	170-180	0	407.5	100,100
DEG	LUMINOUS INTENSITY:cd									UNIT:lm		

Conical surface Flux(90deg): 312.67 lm

%lum = 76.7%

%lamp = 76.7%

Conical surface Flux(120deg): 359.57 lm

%lum = 88.2%

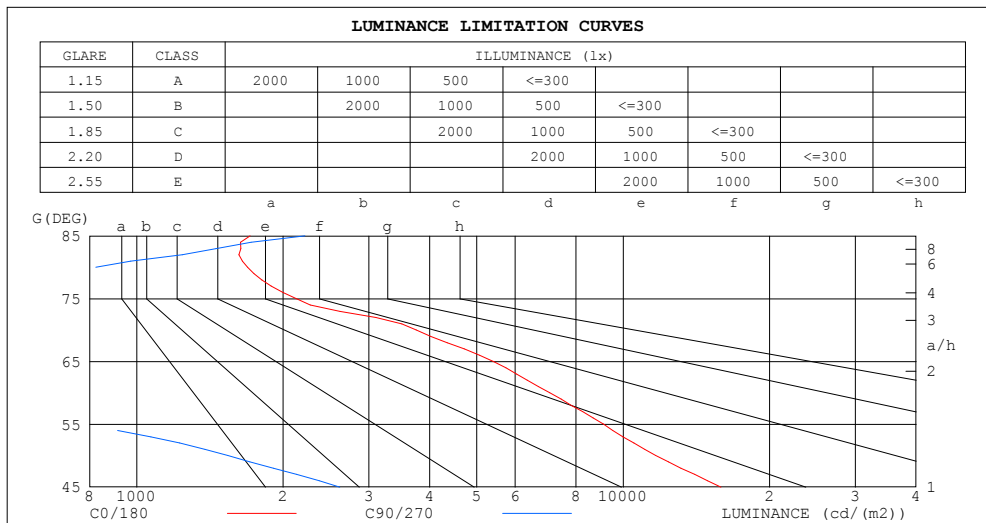
%lamp = 88.2%

C Range: 0 - 360DEG
 C Interval: 15.0DEG
 Test Speed: HIGH
 Temperature:25.3DEG
 Operators:BingYu
 Test Date:2019-11-21

γ Range: 0 - 180DEG
 γ Interval: 1.0DEG
 Test System:EVERFINE GO-2000B_V1 SYSTEM V2.0.265
 Humidity:65.0%
 Test Distance:7.240m [K=1.0000]
 Remarks:

LUMINANCE LIMITATION CURVES

Test:U:225.2V I:0.0510A P:10.60W PF:0.9210 Freq:50.00Hz Lamp Flux:407.534x1 lm		
NAME: REG2075RW-11G40-S	TYPE:	WEIGHT:
SPEC.:	DIM.:	SERIAL No.:
MFR.:	SUR.:66	Shielding Angle:



LUMINANCE cd/(m2)		
G (DEG)	C0/180	C90/270
85	1710	2217
80	1690	824
75	2126	376
70	3753	537
65	5398	492
60	7061	135
55	9108	750
50	11657	1537
45	15892	2616

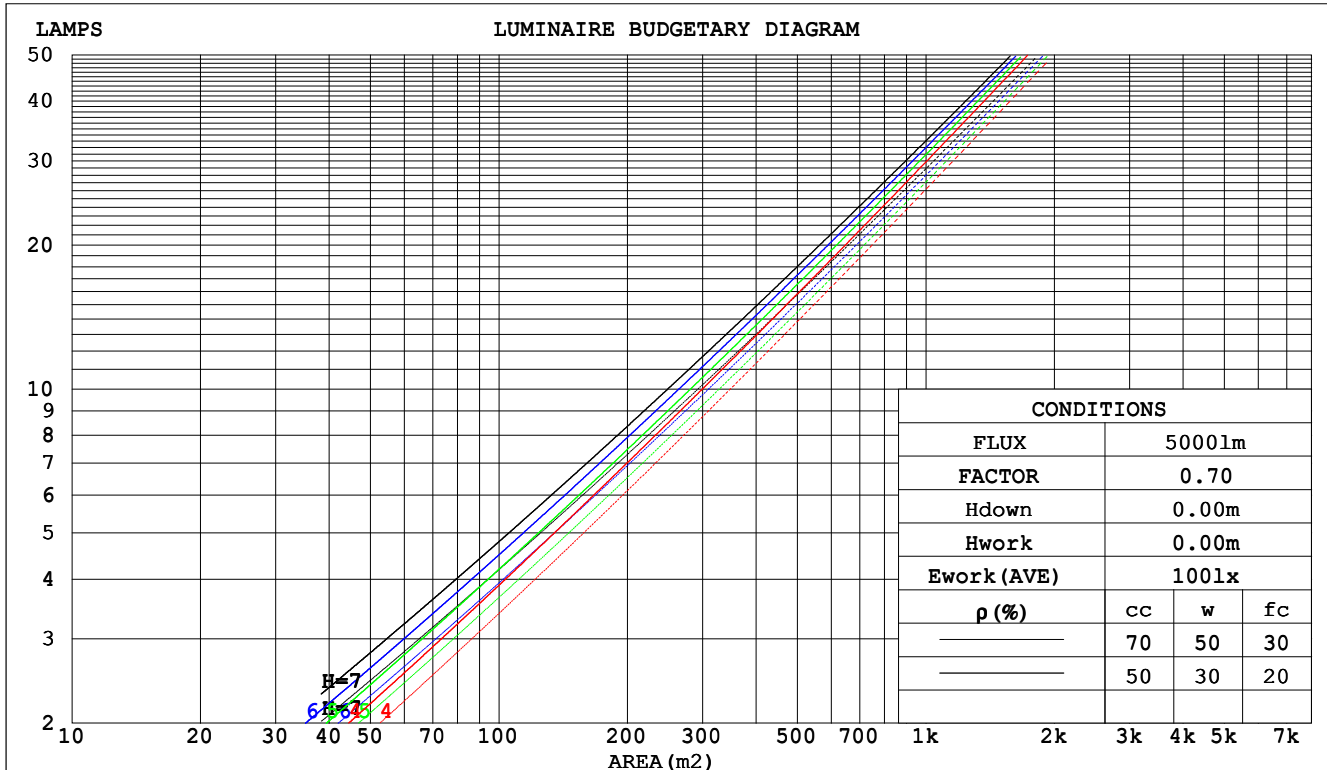
C Range: 0 - 360DEG
C Interval: 15.0DEG
Test Speed: HIGH
Temperature:25.3DEG
Operators:BingYu
Test Date:2019-11-21

γ Range: 0 - 180DEG
 γ Interval: 1.0DEG
Test System:EVERFINE GO-2000B_V1 SYSTEM V2.0.265
Humidity:65.0%
Test Distance:7.240m [K=1.0000]
Remarks:

CU AND LUMINAIRE BUDGETARY ESTIMATE DIAGRAM

Test:U:225.2V I:0.0510A P:10.60W PF:0.9210 Freq:50.00Hz Lamp Flux:407.534x1 lm		
NAME: REG2075RW-11G40-S	TYPE:	WEIGHT:
SPEC.:	DIM.:	SERIAL No.:
MFR.:	SUR.:66	Shielding Angle:

pcc	80%			70%			50%			30%			10%			0
pw	50%	30%	10%	50%	30%	10%	50%	30%	10%	50%	30%	10%	50%	30%	10%	0
pfc	20%			20%			20%			20%			20%			0
RCR	RCR:Room Cavity Ratio						Coefficients of Utilization(CU)									
0.0	1.19	1.19	1.19	1.16	1.16	1.16	1.11	1.11	1.11	1.06	1.06	1.06	1.02	1.02	1.02	.00
1.0	1.08	1.05	1.02	1.06	1.03	1.00	1.02	.99	.97	.98	.96	.94	.94	.93	.92	.90
2.0	.98	.93	.89	.97	.92	.88	.93	.89	.86	.90	.87	.84	.87	.85	.82	.81
3.0	.90	.84	.79	.89	.83	.79	.86	.81	.78	.84	.80	.76	.81	.78	.75	.73
4.0	.84	.77	.72	.82	.76	.72	.80	.75	.71	.78	.74	.70	.76	.72	.69	.67
5.0	.78	.71	.66	.77	.71	.66	.75	.70	.65	.73	.68	.65	.72	.67	.64	.62
6.0	.73	.66	.61	.72	.66	.61	.71	.65	.61	.69	.64	.60	.68	.63	.60	.58
7.0	.69	.62	.57	.68	.62	.57	.67	.61	.57	.65	.60	.57	.64	.60	.56	.55
8.0	.65	.59	.54	.64	.58	.54	.63	.58	.54	.62	.57	.53	.61	.57	.53	.52
9.0	.62	.55	.51	.61	.55	.51	.60	.55	.51	.59	.54	.51	.58	.54	.50	.49
10.0	.59	.53	.49	.58	.52	.49	.57	.52	.48	.57	.52	.48	.56	.51	.48	.47



C Range: 0 - 360DEG
 C Interval: 15.0DEG
 Test Speed: HIGH
 Temperature:25.3DEG
 Operators:BingYu
 Test Date:2019-11-21

γ Range: 0 - 180DEG
 γ Interval: 1.0DEG
 Test System:EVERFINE GO-2000B_V1 SYSTEM V2.0.265
 Humidity:65.0%
 Test Distance:7.240m [K=1.0000]
 Remarks:

WEC AND CCEC

Test:U:225.2V I:0.0510A P:10.60W PF:0.9210 Freq:50.00Hz Lamp Flux:407.534x1 lm					
NAME: REG2075RW-11G40-S			TYPE:		WEIGHT:
SPEC.:			DIM.:		SERIAL No.:
MFR.:			SUR.:66		Shielding Angle:

pcc	80%			70%			50%			30%			10%			0
pw	50%	30%	10%	50%	30%	10%	50%	30%	10%	50%	30%	10%	50%	30%	10%	0
pfc	20%			20%			20%			20%			20%			0
RCR	RCR:Room Cavity Ratio						Wall Exitance Coefficients(WEC)									
0.0																
1.0	.230	.131	.041	.223	.127	.040	.210	.121	.039	.199	.115	.037	.188	.109	.035	
2.0	.215	.118	.036	.209	.115	.036	.198	.110	.034	.188	.106	.033	.179	.101	.032	
3.0	.199	.106	.032	.194	.104	.031	.185	.100	.030	.176	.096	.030	.168	.093	.029	
4.0	.185	.096	.028	.180	.094	.028	.172	.091	.027	.164	.088	.027	.157	.085	.026	
5.0	.172	.087	.025	.168	.086	.025	.161	.084	.025	.154	.081	.024	.148	.079	.024	
6.0	.160	.080	.023	.157	.079	.023	.151	.077	.022	.145	.075	.022	.139	.073	.022	
7.0	.150	.074	.021	.147	.073	.021	.142	.072	.021	.136	.070	.020	.131	.068	.020	
8.0	.141	.069	.019	.139	.068	.019	.134	.067	.019	.129	.065	.019	.125	.064	.019	
9.0	.133	.064	.018	.131	.064	.018	.127	.063	.018	.122	.061	.018	.118	.060	.017	
10.0	.126	.061	.017	.124	.060	.017	.120	.059	.017	.116	.058	.016	.113	.057	.016	

pcc	80%			70%			50%			30%			10%			0
pw	50%	30%	10%	50%	30%	10%	50%	30%	10%	50%	30%	10%	50%	30%	10%	0
pfc	20%			20%			20%			20%			20%			0
RCR	RCR:Room Cavity Ratio						Ceiling Cavity Exitance Coefficients(CCEC)									
0.0	.191	.191	.191	.163	.163	.163	.111	.111	.111	.064	.064	.064	.020	.020	.020	
1.0	.175	.157	.141	.150	.135	.121	.102	.093	.084	.059	.054	.049	.019	.017	.016	
2.0	.162	.132	.107	.139	.114	.093	.095	.079	.065	.055	.046	.038	.018	.015	.012	
3.0	.151	.114	.084	.129	.098	.073	.089	.068	.051	.051	.040	.030	.016	.013	.010	
4.0	.141	.100	.068	.121	.086	.059	.083	.060	.042	.048	.035	.025	.015	.011	.008	
5.0	.132	.088	.056	.113	.076	.049	.078	.053	.034	.045	.031	.020	.015	.010	.007	
6.0	.124	.079	.047	.107	.069	.041	.074	.048	.029	.043	.028	.017	.014	.009	.006	
7.0	.117	.072	.040	.101	.062	.035	.070	.044	.025	.040	.026	.015	.013	.008	.005	
8.0	.111	.065	.034	.095	.057	.030	.066	.040	.021	.038	.024	.013	.012	.008	.004	
9.0	.105	.060	.030	.090	.052	.026	.063	.037	.019	.036	.022	.011	.012	.007	.004	
10.0	.100	.056	.027	.086	.048	.023	.060	.034	.016	.035	.020	.010	.011	.007	.003	

C Range: 0 - 360DEG
C Interval: 15.0DEG
Test Speed: HIGH
Temperature:25.3DEG
Operators:BingYu
Test Date:2019-11-21

γ Range: 0 - 180DEG
γ Interval: 1.0DEG
Test System:EVERFINE GO-2000B_V1 SYSTEM V2.0.265
Humidity:65.0%
Test Distance:7.240m [K=1.0000]
Remarks:

UGR(Unified Glare Rating) Table

Test:U:225.2V I:0.0510A P:10.60W PF:0.9210 Freq:50.00Hz Lamp Flux:407.534x1 lm											
NAME: REG2075RW-11G40-S						TYPE:		WEIGHT:			
SPEC.:						DIM.:		SERIAL No.:			
MFR.:						SUR.:66		Shielding Angle:			
ceiling/cavity	0.7	0.7	0.5	0.5	0.3	0.7	0.7	0.5	0.5	0.3	
walls	0.5	0.3	0.5	0.3	0.3	0.5	0.3	0.5	0.3	0.3	
working plane	0.2	0.2	0.2	0.2	0.2	0.2	0.2	0.2	0.2	0.2	
Room dimensions		Viewed crosswise					Viewed endwise				
x = 2H y = 2H		17.2	18.3	17.5	18.5	18.7	8.6	9.7	8.9	9.9	10.1
	3H	17.4	18.4	17.7	18.6	18.8	8.6	9.6	8.8	9.8	10.0
	4H	17.4	18.3	17.6	18.6	18.8	8.5	9.5	8.8	9.7	10.0
	6H	17.3	18.2	17.6	18.5	18.7	8.6	9.5	8.9	9.8	10.0
	8H	17.3	18.2	17.6	18.5	18.7	8.8	9.7	9.1	9.9	10.2
	12H	17.3	18.1	17.6	18.4	18.7	9.2	10.0	9.5	10.3	10.6
4H	2H	17.0	17.9	17.3	18.2	18.4	8.6	9.5	8.9	9.8	10.0
	3H	17.1	18.0	17.4	18.2	18.5	8.5	9.4	8.8	9.6	9.9
	4H	17.1	17.9	17.4	18.2	18.5	8.5	9.3	8.8	9.6	9.9
	6H	17.0	17.7	17.4	18.1	18.4	8.6	9.3	9.0	9.7	10.0
	8H	17.0	17.7	17.4	18.0	18.4	9.0	9.6	9.4	10.0	10.4
	12H	17.0	17.6	17.4	18.0	18.4	9.6	10.2	10.0	10.6	11.0
8H	4H	16.9	17.6	17.3	17.9	18.3	8.4	9.0	8.8	9.4	9.7
	6H	16.9	17.4	17.3	17.8	18.3	8.6	9.2	9.1	9.6	10.0
	8H	16.9	17.4	17.3	17.8	18.2	9.1	9.6	9.5	10.0	10.4
	12H	16.9	17.3	17.4	17.8	18.2	10.1	10.5	10.6	11.0	11.4
12H	4H	16.9	17.5	17.3	17.9	18.2	8.3	8.9	8.7	9.3	9.7
	6H	16.9	17.3	17.3	17.8	18.2	8.6	9.1	9.1	9.5	10.0
	8H	16.9	17.3	17.3	17.7	18.2	9.2	9.6	9.6	10.0	10.5
Variations with the observer position at spacings:											
S = 1.0H		+ 3.7 / - 3.9					+ 1.6 / - 2.5				
1.5H		+ 5.0 / - 6.9					+ 1.7 / - 2.2				
2.0H		+ 5.9 / - 9.6					+ 3.2 / - 2.3				

CIE Pub.117, 407.5 lm Total Lamp Luminous Flux Correct (8log(F/F0) = -3.1)

C Range: 0 - 360DEG
C Interval: 15.0DEG
Test Speed: HIGH
Temperature:25.3DEG
Operators:BingYu
Test Date:2019-11-21

γ Range: 0 - 180DEG
γ Interval: 1.0DEG
Test System:EVERFINE GO-2000B_V1 SYSTEM V2.0.265
Humidity:65.0%
Test Distance:7.240m [K=1.0000]
Remarks:

UTILIZATION FACTORS TABLE

Test:U:225.2V I:0.0510A P:10.60W PF:0.9210 Freq:50.00Hz Lamp Flux:407.534x1 lm		
NAME: REG2075RW-11G40-S	TYPE:	WEIGHT:
SPEC.:	DIM.:	SERIAL No.:
MFR.:	SUR.:66	Shielding Angle:

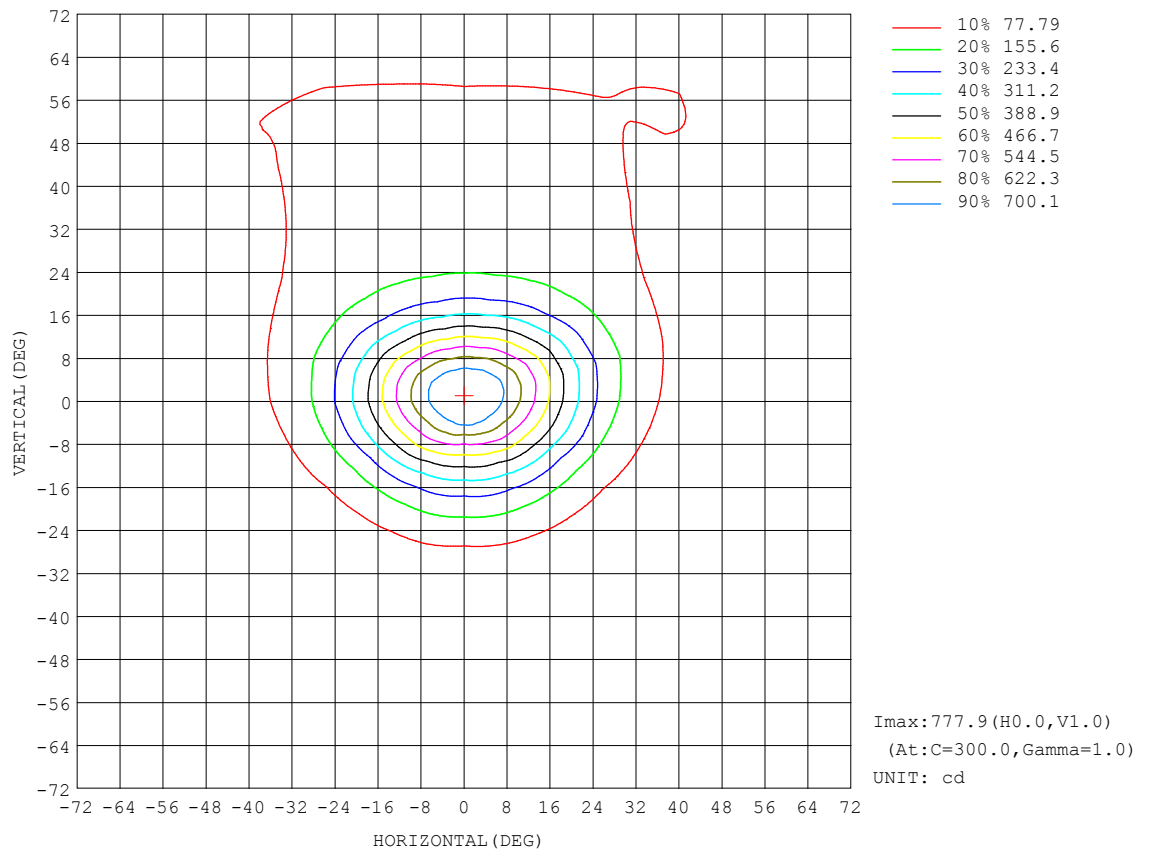
REFLECTANCE										
Ceiling	0.8	0.8	0.8	0.7	0.7	0.7	0.5	0.5	0.5	0
Walls	0.7	0.5	0.3	0.7	0.5	0.3	0.7	0.5	0.3	0
Working plane	0.2	0.2	0.2	0.2	0.2	0.2	0.2	0.2	0.2	0
ROOM INDEX	UTILIZATION FACTORS (PERCENT) $k(RI) \times RCR = 5$									
$k = 0.60$	75	66	61	74	66	61	73	65	61	56
0.80	83	75	69	82	74	69	81	74	69	64
1.00	89	81	76	88	80	75	86	81	75	69
1.25	94	86	81	93	86	81	91	85	80	75
1.50	98	91	86	96	90	85	94	88	84	78
2.00	102	96	91	101	95	90	98	93	89	83
2.50	105	99	95	103	98	94	100	95	92	85
3.00	107	102	98	105	101	97	102	98	95	88
4.00	110	106	103	108	104	101	104	101	99	91
5.00	112	109	106	110	107	104	106	103	101	93
ROOM INDEX	UF (total)									Direct
According to DIN EN 13032-2 2004			Suspended					SHRNOM = 1.25		

C Range: 0 - 360DEG
C Interval: 15.0DEG
Test Speed: HIGH
Temperature:25.3DEG
Operators:BingYu
Test Date:2019-11-21

γ Range: 0 - 180DEG
 γ Interval: 1.0DEG
Test System:EVERFINE GO-2000B_V1 SYSTEM V2.0.265
Humidity:65.0%
Test Distance:7.240m [K=1.0000]
Remarks:

ISOCANDELA DIAGRAM

Test:U:225.2V I:0.0510A P:10.60W PF:0.9210 Freq:50.00Hz Lamp Flux:407.534x1 lm		
NAME: REG2075RW-11G40-S	TYPE:	WEIGHT:
SPEC.:	DIM.:	SERIAL No.:
MFR.:	SUR.:66	Shielding Angle:

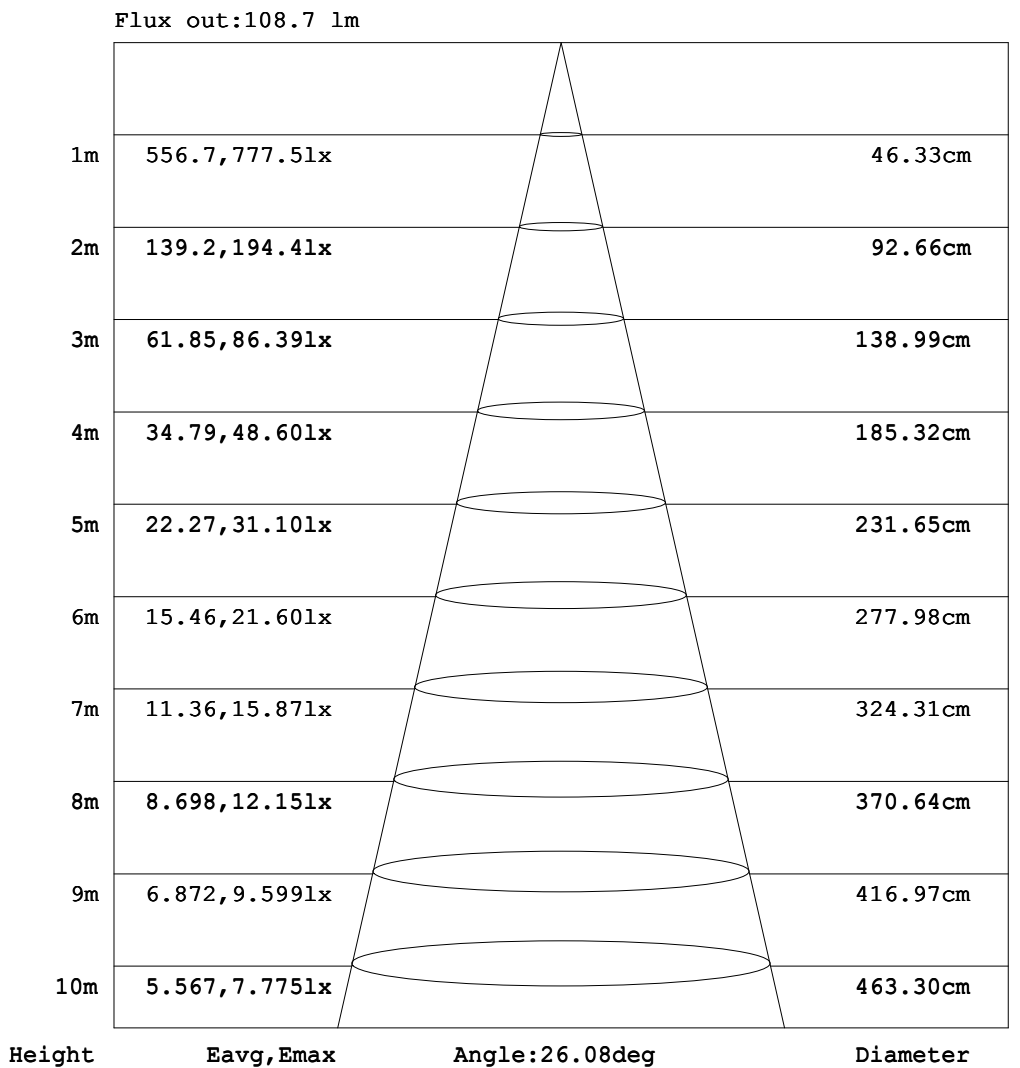


C Range: 0 - 360DEG
C Interval: 15.0DEG
Test Speed: HIGH
Temperature: 25.3DEG
Operators: BingYu
Test Date: 2019-11-21

γ Range: 0 - 180DEG
 γ Interval: 1.0DEG
Test System: EVERFINE GO-2000B_V1 SYSTEM V2.0.265
Humidity: 65.0%
Test Distance: 7.240m [K=1.0000]
Remarks:

AAI Figure

Test:U:225.2V I:0.0510A P:10.60W PF:0.9210 Freq:50.00Hz Lamp Flux:407.534x1 lm		
NAME: REG2075RW-11G40-S	TYPE:	WEIGHT:
SPEC.:	DIM.:	SERIAL No.:
MFR.:	SUR.:66	Shielding Angle:



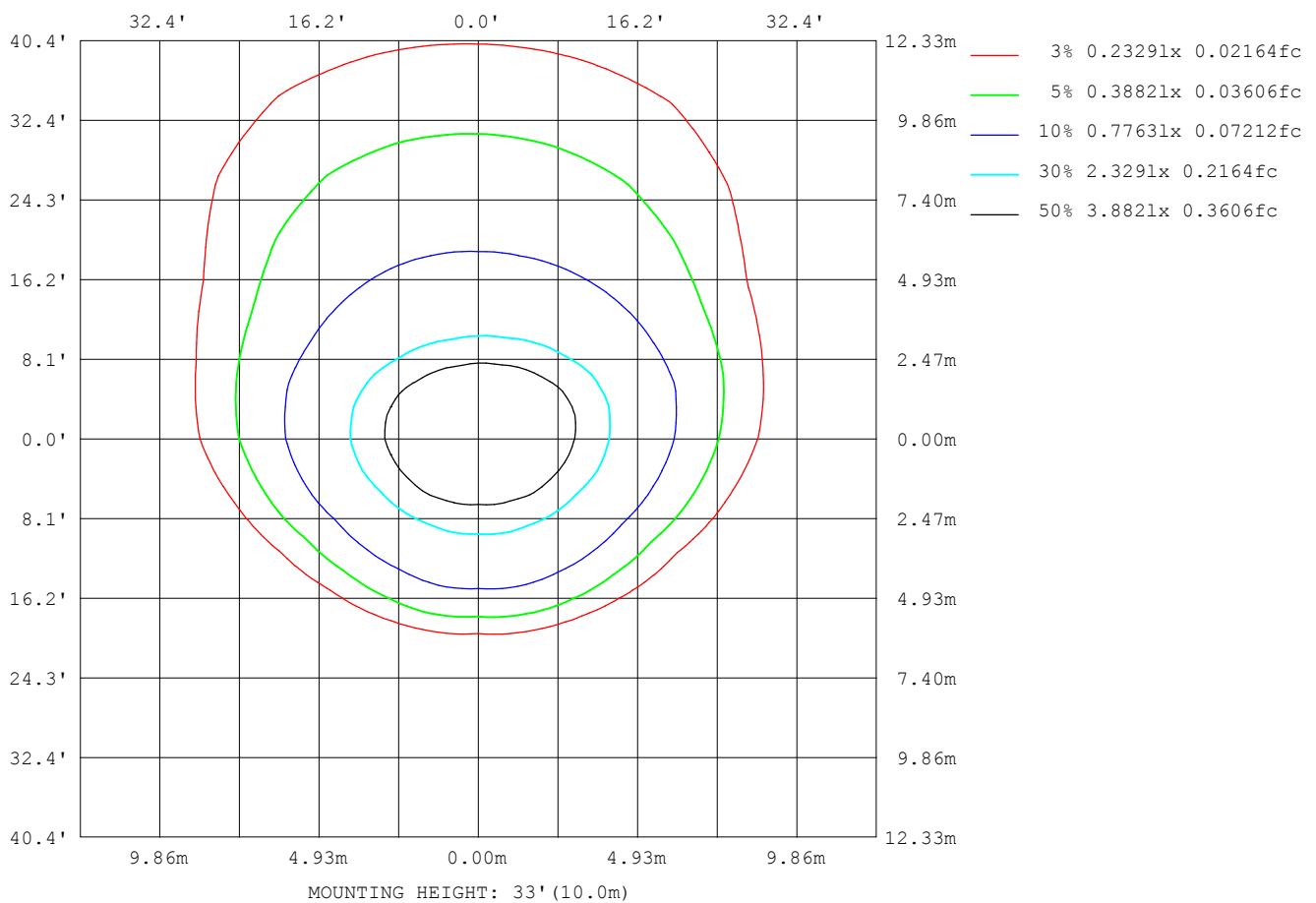
Note:The Curves indicate the illuminated area and the average illumination when the luminaire is at different distance.

C Range: 0 - 360DEG
C Interval: 15.0DEG
Test Speed: HIGH
Temperature:25.3DEG
Operators:BingYu
Test Date:2019-11-21

γ Range: 0 - 180DEG
γ Interval: 1.0DEG
Test System:EVERFINE GO-2000B_V1 SYSTEM V2.0.265
Humidity:65.0%
Test Distance:7.240m [K=1.0000]
Remarks:

ISOLUX DIAGRAM

Test:U:225.2V I:0.0510A P:10.60W PF:0.9210 Freq:50.00Hz Lamp Flux:407.534x1 lm		
NAME: REG2075RW-11G40-S	TYPE:	WEIGHT:
SPEC.:	DIM.:	SERIAL No.:
MFR.:	SUR.:66	Shielding Angle:



C Range: 0 - 360DEG
C Interval: 15.0DEG
Test Speed: HIGH
Temperature:25.3DEG
Operators:BingYu
Test Date:2019-11-21

γ Range: 0 - 180DEG
 γ Interval: 1.0DEG
Test System:EVERFINE GO-2000B_V1 SYSTEM V2.0.265
Humidity:65.0%
Test Distance:7.240m [K=1.0000]
Remarks:

LED Avg.L Report

Test:U:225.2V I:0.0510A P:10.60W PF:0.9210 Freq:50.00Hz Lamp Flux:407.534x1 lm		
NAME: REG2075RW-11G40-S	TYPE:	WEIGHT:
SPEC.:	DIM.:	SERIAL No.:
MFR.:	SUR.:66	Shielding Angle:

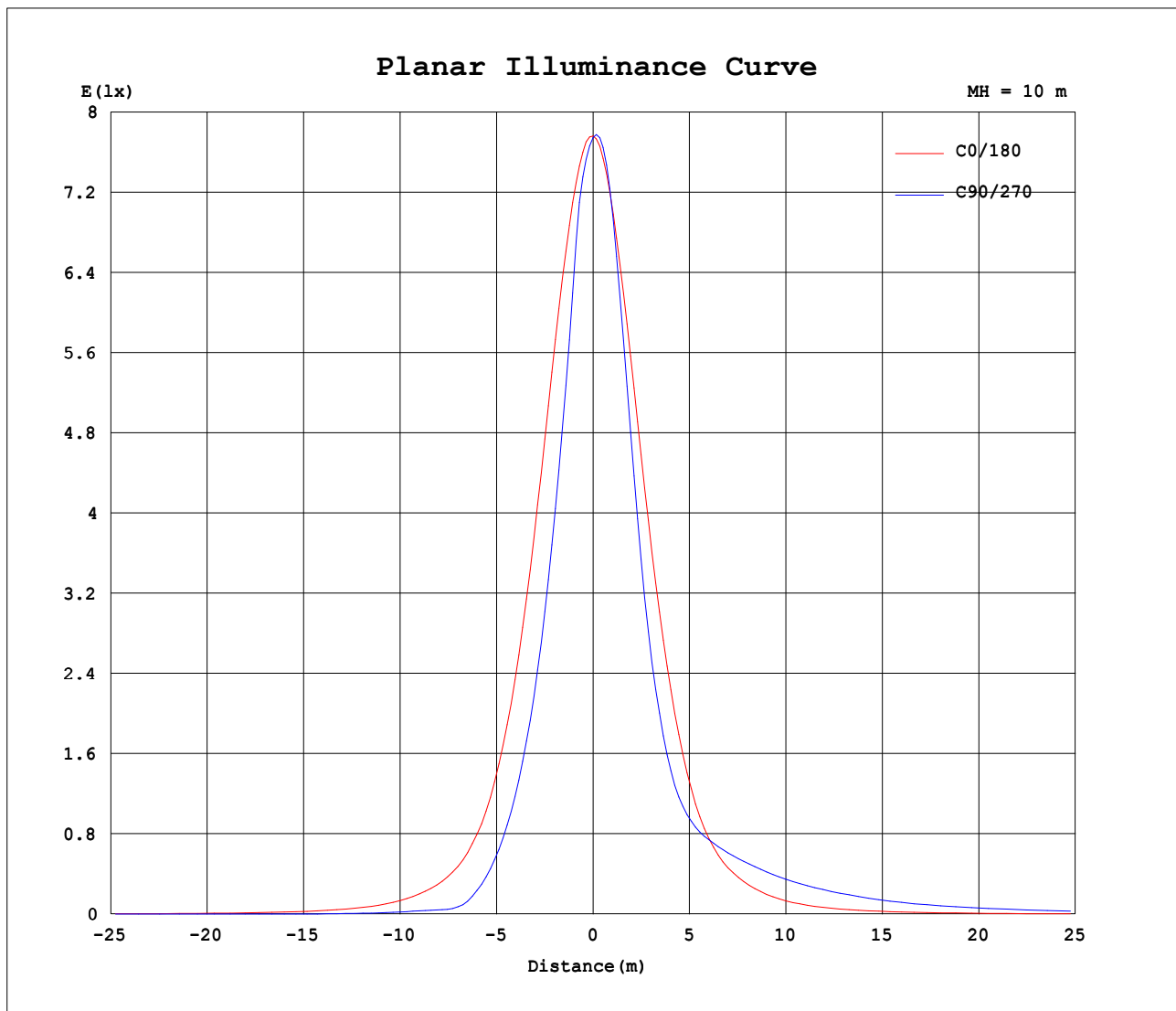
AvgL	cd/m2
L_0~180 (65) av	5648
L_0~180 (75) av	2370
L_0~180 (85) av	1357
L_90~270 (65) av	23219
L_90~270 (75) av	23636
L_90~270 (85) av	8316
L_45 (65) av	26360
L_45 (75) av	24097
L_45 (85) av	12872

Standard: GB/T 29293-2012

C Range: 0 - 360DEG
 C Interval: 15.0DEG
 Test Speed: HIGH
 Temperature:25.3DEG
 Operators:BingYu
 Test Date:2019-11-21

γ Range: 0 - 180DEG
 γ Interval: 1.0DEG
 Test System:EVERFINE GO-2000B_V1 SYSTEM V2.0.265
 Humidity:65.0%
 Test Distance:7.240m [K=1.0000]
 Remarks:

Planar Illuminance Curve



C Range: 0 - 360DEG
C Interval: 15.0DEG
Test Speed: HIGH
Temperature: 25.3DEG
Operators: BingYu
Test Date: 2019-11-21

γ Range: 0 - 180DEG
 γ Interval: 1.0DEG
Test System: EVERFINE GO-2000B_V1 SYSTEM V2.0.265
Humidity: 65.0%
Test Distance: 7.240m [K=1.0000]
Remarks:

LUMINOUS DISTRIBUTION INTENSITY DATA

Test:U:225.2V I:0.0510A P:10.60W PF:0.9210 Freq:50.00Hz Lamp Flux:407.534x1 lm		
NAME: REG2075RW-11G40-S	TYPE:	WEIGHT:
SPEC.:	DIM.:	SERIAL No.:
MFR.:	SUR.:66	Shielding Angle:

Table--1

UNIT: cd

C (DEG) γ (DEG)	0	15	30	45	60	75	90	105	120	135	150	165	180	195	210	225	240	255	270
0	775	775	775	775	775	775	775	775	775	775	775	775	775	775	775	775	775	775	775
5	737	727	711	702	691	688	679	682	682	692	701	716	728	733	739	734	734	727	732
10	632	602	565	538	500	478	464	477	499	530	553	586	615	623	619	590	571	546	552
15	488	449	404	367	328	313	301	310	321	360	393	433	471	477	459	411	379	349	351
20	344	307	252	223	201	192	184	188	193	212	242	294	329	333	308	260	234	213	214
25	226	186	146	127	115	109	102	106	108	119	137	177	214	219	196	169	155	146	145
30	139	109	80.4	66.9	58.5	51.7	46.2	51.2	54.8	61.7	76.2	104	132	141	132	126	125	122	120
35	86.7	65.2	44.4	34.2	24.1	16.4	13.4	16.5	24.3	32.0	43.5	62.8	84.1	95.2	99.3	108	111	111	111
40	57.4	40.0	24.3	17.2	10.4	8.73	8.81	8.74	10.3	16.6	23.9	38.8	56.7	66.3	78.0	95.0	104	106	105
45	38.4	25.1	14.3	8.82	6.12	6.11	6.33	5.65	5.59	8.81	13.7	24.6	37.8	46.5	62.9	86.4	98.6	99.9	98.8
50	25.6	15.8	8.73	5.28	3.92	3.63	3.38	3.23	3.58	5.30	8.39	15.5	25.7	34.6	53.7	80.3	93.7	94.0	92.5
55	17.8	9.84	5.54	3.04	2.02	1.71	1.47	1.43	1.65	2.91	5.06	9.56	18.5	30.2	49.9	77.2	87.8	86.8	85.0
60	12.1	5.74	2.73	0.69	0.16	0.16	0.23	0.00	0.00	0.15	2.13	5.33	13.1	36.9	47.2	77.8	80.6	77.4	75.1
65	7.79	2.97	0.77	0.10	0.13	0.58	0.71	0.26	0.00	0.00	0.54	2.66	8.53	33.5	40.3	72.2	72.5	68.4	66.4
70	4.38	1.06	0.23	0.14	0.16	0.46	0.63	0.14	0.04	0.01	0.00	0.51	4.25	15.5	32.4	56.0	61.5	56.1	54.8
75	1.88	0.40	0.23	0.22	0.23	0.29	0.33	0.25	0.13	0.12	0.05	0.09	2.31	12.9	28.0	43.8	47.2	42.5	41.5
80	1.00	0.35	0.28	0.32	0.31	0.42	0.49	0.38	0.27	0.24	0.13	0.10	1.15	8.44	19.3	27.5	29.1	25.9	25.8
85	0.51	0.35	0.38	0.45	0.46	0.61	0.66	0.56	0.43	0.40	0.30	0.16	0.30	2.16	4.82	4.69	4.11	3.25	4.29
90	0.34	0.43	0.56	0.62	0.66	0.87	0.90	0.80	0.67	0.62	0.49	0.31	0.16	0.29	0.38	0.17	0.05	0.09	0.08
95	0.00	0.00	0.00	0.00	0.00	0.00	0.00	0.00	0.00	0.00	0.00	0.00	0.00	0.00	0.00	0.00	0.00	0.00	0.00
100	0.00	0.00	0.00	0.00	0.00	0.00	0.00	0.00	0.00	0.00	0.00	0.00	0.00	0.00	0.00	0.00	0.00	0.00	0.00
105	0.00	0.00	0.00	0.00	0.00	0.00	0.00	0.00	0.00	0.00	0.00	0.00	0.00	0.00	0.00	0.00	0.00	0.00	0.00
110	0.00	0.00	0.00	0.00	0.00	0.00	0.00	0.00	0.00	0.00	0.00	0.00	0.00	0.00	0.00	0.00	0.00	0.00	0.00
115	0.00	0.00	0.00	0.00	0.00	0.00	0.00	0.00	0.00	0.00	0.00	0.00	0.00	0.00	0.00	0.00	0.00	0.00	0.00
120	0.00	0.00	0.00	0.00	0.00	0.00	0.00	0.00	0.00	0.00	0.00	0.00	0.00	0.00	0.00	0.00	0.00	0.00	0.00
125	0.00	0.00	0.00	0.00	0.00	0.00	0.00	0.00	0.00	0.00	0.00	0.00	0.00	0.00	0.00	0.00	0.00	0.00	0.00
130	0.00	0.00	0.00	0.00	0.00	0.00	0.00	0.00	0.00	0.00	0.00	0.00	0.00	0.00	0.00	0.00	0.00	0.00	0.00
135	0.00	0.00	0.00	0.00	0.00	0.00	0.00	0.00	0.00	0.00	0.00	0.00	0.00	0.00	0.00	0.00	0.00	0.00	0.00
140	0.00	0.00	0.00	0.00	0.00	0.00	0.00	0.00	0.00	0.00	0.00	0.00	0.00	0.00	0.00	0.00	0.00	0.00	0.00
145	0.00	0.00	0.00	0.00	0.00	0.00	0.00	0.00	0.00	0.00	0.00	0.00	0.00	0.00	0.00	0.00	0.00	0.00	0.00
150	0.00	0.00	0.00	0.00	0.00	0.00	0.00	0.00	0.00	0.00	0.00	0.00	0.00	0.00	0.00	0.00	0.00	0.00	0.00
155	0.00	0.00	0.00	0.00	0.00	0.00	0.00	0.00	0.00	0.00	0.00	0.00	0.00	0.00	0.00	0.00	0.00	0.00	0.00
160	0.00	0.00	0.00	0.00	0.00	0.00	0.00	0.00	0.00	0.00	0.00	0.00	0.00	0.00	0.00	0.00	0.00	0.00	0.00
165	0.00	0.00	0.00	0.00	0.00	0.00	0.00	0.00	0.00	0.00	0.00	0.00	0.00	0.00	0.00	0.00	0.00	0.00	0.00
170	0.00	0.00	0.00	0.00	0.00	0.00	0.00	0.00	0.00	0.00	0.00	0.00	0.00	0.00	0.00	0.00	0.00	0.00	0.00
175	0.00	0.00	0.00	0.00	0.00	0.00	0.00	0.00	0.00	0.00	0.00	0.00	0.00	0.00	0.00	0.00	0.00	0.00	0.00
180	0.00	0.00	0.00	0.00	0.00	0.00	0.00	0.00	0.00	0.00	0.00	0.00	0.00	0.00	0.00	0.00	0.00	0.00	0.00

C Range: 0 - 360DEG
C Interval: 15.0DEG
Test Speed: HIGH
Temperature:25.3DEG
Operators:BingYu
Test Date:2019-11-21

γ Range: 0 - 180DEG
γ Interval: 1.0DEG
Test System:EVERFINE GO-2000B_V1 SYSTEM V2.0.265
Humidity:65.0%
Test Distance:7.240m [K=1.0000]
Remarks:

LUMINOUS DISTRIBUTION INTENSITY DATA

Test:U:225.2V I:0.0510A P:10.60W PF:0.9210 Freq:50.00Hz Lamp Flux:407.534x1 lm		
NAME: REG2075RW-11G40-S	TYPE:	WEIGHT:
SPEC.:	DIM.:	SERIAL No.:
MFR.:	SUR.:66	Shielding Angle:

Table--2

UNIT: cd

C (DEG) γ (DEG)	285	300	315	330	345														
0	775	775	775	775	775														
5	732	743	745	751	745														
10	557	590	615	647	649														
15	360	400	442	496	510														
20	220	250	287	343	364														
25	147	160	182	221	243														
30	121	125	130	144	157														
35	109	109	107	103	102														
40	103	100	90.9	76.7	68.7														
45	97.2	93.7	80.5	58.7	47.0														
50	91.5	88.8	73.6	47.4	32.5														
55	84.9	84.2	70.8	43.1	25.9														
60	76.6	78.1	81.8	43.8	27.5														
65	68.3	70.3	80.0	40.0	31.3														
70	56.3	60.0	52.5	31.5	20.4														
75	42.5	45.8	41.2	26.3	10.6														
80	26.4	29.4	28.1	19.6	7.68														
85	5.27	8.39	9.80	7.34	2.90														
90	0.07	0.04	0.17	0.40	0.02														
95	0.00	0.00	0.00	0.00	0.00														
100	0.00	0.00	0.00	0.00	0.00														
105	0.00	0.00	0.00	0.00	0.00														
110	0.00	0.00	0.00	0.00	0.00														
115	0.00	0.00	0.00	0.00	0.00														
120	0.00	0.00	0.00	0.00	0.00														
125	0.00	0.00	0.00	0.00	0.00														
130	0.00	0.00	0.00	0.00	0.00														
135	0.00	0.00	0.00	0.00	0.00														
140	0.00	0.00	0.00	0.00	0.00														
145	0.00	0.00	0.00	0.00	0.00														
150	0.00	0.00	0.00	0.00	0.00														
155	0.00	0.00	0.00	0.00	0.00														
160	0.00	0.00	0.00	0.00	0.00														
165	0.00	0.00	0.00	0.00	0.00														
170	0.00	0.00	0.00	0.00	0.00														
175	0.00	0.00	0.00	0.00	0.00														
180	0.00	0.00	0.00	0.00	0.00														

C Range: 0 - 360DEG
C Interval: 15.0DEG
Test Speed: HIGH
Temperature:25.3DEG
Operators:BingYu
Test Date:2019-11-21

γ Range: 0 - 180DEG
γ Interval: 1.0DEG
Test System:EVERFINE GO-2000B_V1 SYSTEM V2.0.265
Humidity:65.0%
Test Distance:7.240m [K=1.0000]
Remarks: