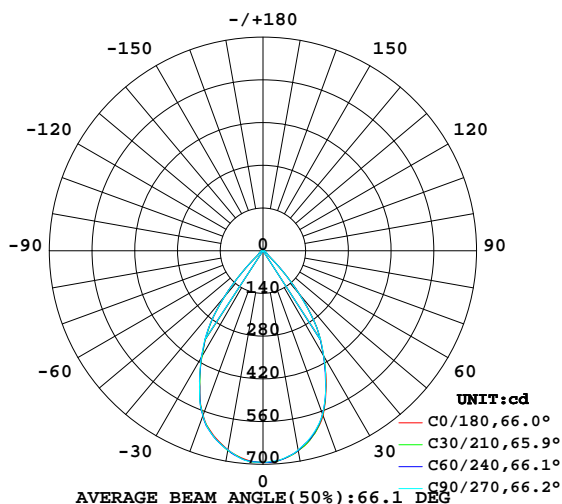


LUMINAIRE PHOTOMETRIC TEST REPORT

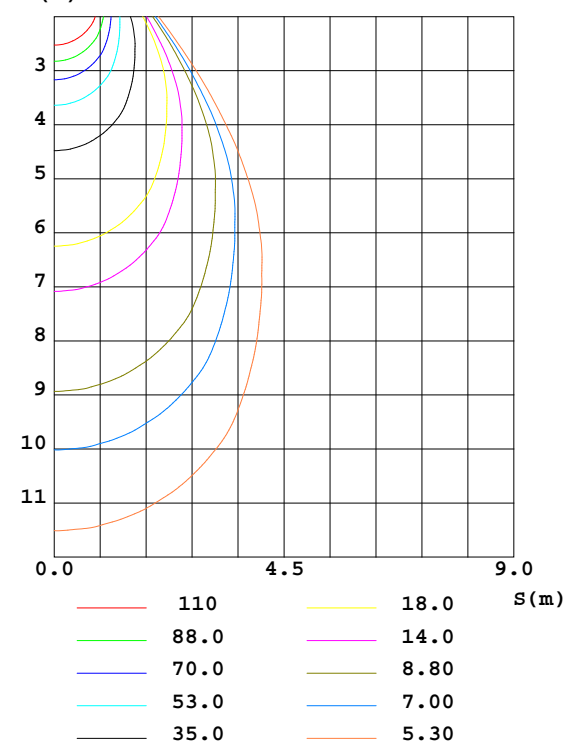
Test:U:226.5V I:0.0600A P:10.80W PF:0.7910 Lamp Flux:773.658x1 lm		
NAME:	TYPE:	WEIGHT:
DIM.:	SPEC.:	SERIAL No.:
MFR.: Rayconn	SUR.:	PROTECTION ANGLE:

DATA OF LAMP		PHOTOMETRIC DATA Eff: 71.64 lm/W			
MODEL	M031-11W-927-S-60	Imax(cd)	694.6	S/MH(C0/180)	0.97
NOMINAL POWER(W)	12	LOR(%)	100.0	S/MH(C90/270)	0.96
RATED VOLTAGE(V)	226	TOTAL FLUX(lm)	773.66	η UP,DN(C0-180)	1.2,48.6
NOMINAL FLUX(lm)	773.658	CIE CLASS	DIRECT	η UP,DN(C180-360)	1.2,49.0
LAMPS INSIDE	1	η up(%)	2.4	CIBSE SHR NOM	1.00
TEST VOLTAGE(V)	226.5	η down(%)	97.6	CIBSE SHR MAX	1.05

LUMINOUS INTENSITY DISTRIBUTION DIAGRAM



C0 PLANE ISOLUX DIAGRAM (UNIT:lx)



C Range: 0 - 360DEG
C Interval: 15.0DEG
Test Speed: HIGH
Temperature:25.3DEG
Operators:ZhangXiao
Test Date:2015-12-07

γ Range: 0 - 180DEG
γ Interval: 1.0DEG
Test System:EVERFINE GO-2000B_V1 SYSTEM V2.0.265
Humidity:65.0%
Test Distance:6.590m [K=1.0000]
Remarks:

ZONAL FLUX DIAGRAM

ZONAL FLUX DIAGRAM:

γ	C0	C45	C90	C135	C180	C225	C270	C315	γ	Φ zone	Φ total	%lum, lamp
10	665.9	665.6	663.3	659.8	662.1	662.9	663.1	665.7	0- 10	64.82	64.82	8.38,8.38
20	575.7	574.2	570.3	571.6	573.6	573.3	574.9	574.6	10- 20	175.7	240.6	31.1,31.1
30	399.5	401.5	397.6	401.5	401.6	400.8	403.8	400.3	20- 30	224.1	464.6	60.1,60.1
40	188.4	191.0	185.4	196.6	196.0	192.4	195.3	192.5	30- 40	188.6	653.2	84.4,84.4
50	22.02	22.45	22.16	22.43	23.28	23.49	22.01	21.74	40- 50	64.83	718.0	92.8,92.8
60	12.87	13.17	13.28	13.72	14.04	13.75	13.13	12.83	50- 60	14.93	733.0	94.7,94.7
70	8.297	8.547	8.809	9.246	9.501	9.233	8.851	8.460	60- 70	10.83	743.8	96.1,96.1
80	4.647	4.785	5.030	5.465	5.533	5.616	5.354	4.948	70- 80	7.376	751.2	97.1,97.1
90	1.222	1.220	1.238	1.238	1.401	1.404	1.417	1.439	80- 90	3.885	755.1	97.6,97.6
100	1.440	1.456	1.449	1.473	1.678	1.667	1.691	1.681	90-100	1.567	756.6	97.8,97.8
110	1.864	1.873	1.872	1.889	2.129	2.116	2.136	2.132	100-110	1.873	758.5	98,98
120	2.483	2.490	2.490	2.502	2.743	2.740	2.745	2.752	110-120	2.274	760.8	98.3,98.3
130	3.267	3.279	3.277	3.291	3.489	3.473	3.485	3.485	120-130	2.676	763.5	98.7,98.7
140	4.119	4.129	4.131	4.144	4.262	4.244	4.257	4.260	130-140	2.927	766.4	99.1,99.1
150	4.757	4.779	4.764	4.782	4.859	4.841	4.856	4.854	140-150	2.836	769.2	99.4,99.4
160	5.251	5.263	5.244	5.254	5.330	5.318	5.322	5.317	150-160	2.331	771.6	99.7,99.7
170	5.673	5.691	5.677	5.684	5.725	5.702	5.720	5.711	160-170	1.553	773.1	99.9,99.9
180	5.937	5.954	5.942	5.951	5.960	5.942	5.947	5.942	170-180	0.5539	773.7	100,100
DEG	LUMINOUS INTENSITY:cd									UNIT:lm		

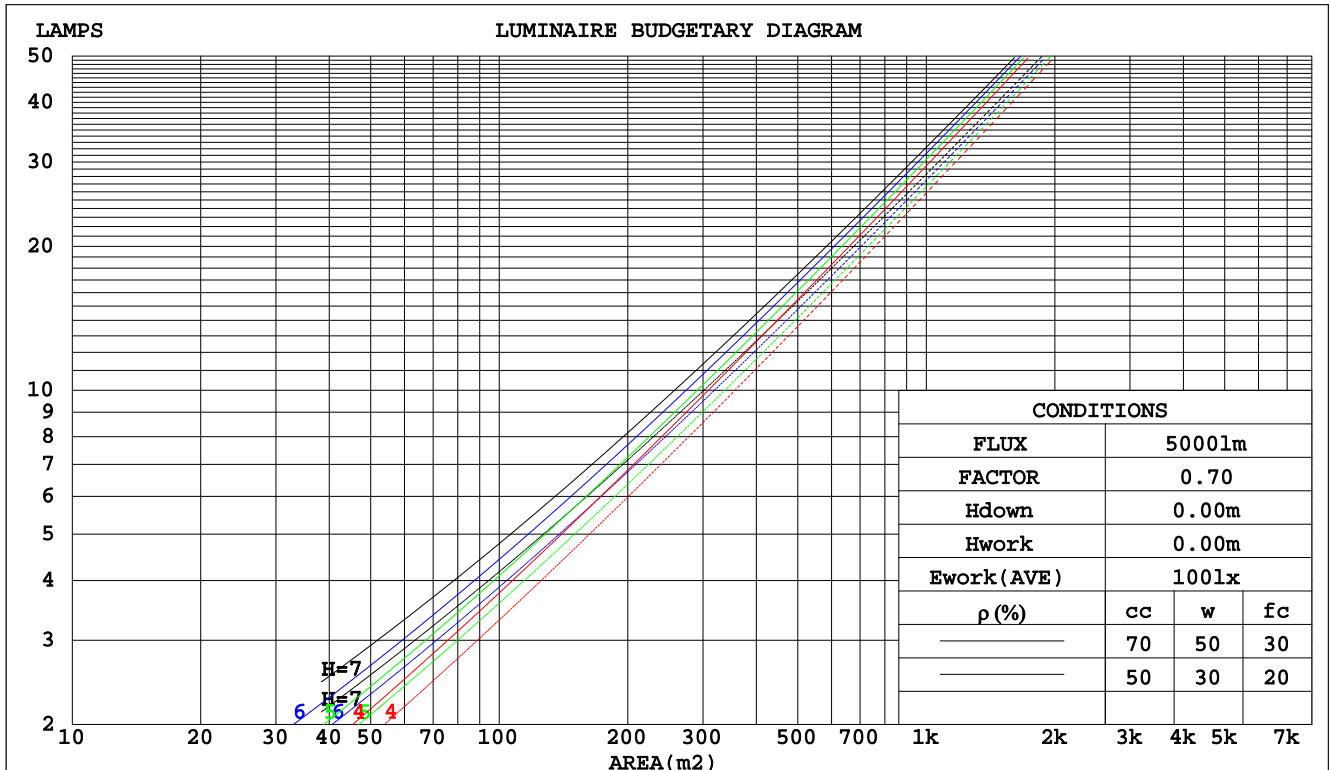
C Range: 0 - 360DEG
C Interval: 15.0DEG
Test Speed: HIGH
Temperature:25.3DEG
Operators:ZhangXiao
Test Date:2015-12-07

γ Range: 0 - 180DEG
 γ Interval: 1.0DEG
 γ Test System:EVERFINE GO-2000B_V1 SYSTEM V2.0.265
Humidity:65.0%
Test Distance:6.590m [K=1.0000]
Remarks:

CU AND LUMINAIRE BUDGETARY ESTIMATE DIAGRAM

Test:U:226.5V I:0.0600A P:10.80W PF:0.7910 Lamp Flux:773.658x1 lm		
NAME:	TYPE:	WEIGHT:
DIM.:	SPEC.:	SERIAL No.:
MFR.: Rayconn	SUR.:	PROTECTION ANGLE:

pcc	80%			70%			50%			30%			10%			0
pw	50%	30%	10%	50%	30%	10%	50%	30%	10%	50%	30%	10%	50%	30%	10%	0
pfc	20%			20%			20%			20%			20%			0
RCR	RCR:Room Cavity Ratio						Coefficients of Utilization(CU)									
0.0	1.18	1.18	1.18	1.15	1.15	1.15	1.10	1.10	1.10	1.05	1.05	1.05	.00	.00	.00	.98
1.0	1.09	1.06	1.04	1.07	1.04	1.02	1.02	1.00	.98	.98	.96	.95	.94	.93	.92	.90
2.0	1.00	.96	.92	.98	.94	.91	.95	.91	.89	.91	.89	.86	.88	.86	.84	.82
3.0	.93	.87	.83	.91	.86	.82	.88	.84	.80	.85	.82	.79	.83	.80	.77	.76
4.0	.86	.80	.75	.85	.79	.75	.82	.77	.73	.80	.76	.72	.78	.74	.71	.70
5.0	.80	.73	.69	.79	.73	.68	.77	.71	.67	.75	.70	.67	.73	.69	.66	.64
6.0	.74	.68	.63	.73	.67	.63	.72	.66	.62	.70	.65	.62	.68	.64	.61	.59
7.0	.69	.63	.58	.69	.62	.58	.67	.62	.58	.66	.61	.57	.64	.60	.57	.55
8.0	.65	.59	.54	.64	.58	.54	.63	.57	.54	.62	.57	.53	.60	.56	.53	.51
9.0	.61	.55	.50	.60	.54	.50	.59	.54	.50	.58	.53	.50	.57	.53	.49	.48
10.0	.57	.51	.47	.57	.51	.47	.56	.50	.47	.55	.50	.46	.54	.49	.46	.45



C Range: 0 - 360DEG
C Interval: 15.0DEG
Test Speed: HIGH
Temperature: 25.3DEG
Operators: ZhangXiao
Test Date: 2015-12-07

γ Range: 0 - 180DEG
γ Interval: 1.0DEG
Test System: EVERFINE GO-2000B_V1 SYSTEM V2.0.265
Humidity: 65.0%
Test Distance: 6.590m [K=1.0000]
Remarks:

WEC AND CCEC

Test:U:226.5V I:0.0600A P:10.80W PF:0.7910 Lamp Flux:773.658x1 lm		
NAME:	TYPE:	WEIGHT:
DIM.:	SPEC.:	SERIAL No.:
MFR.: Rayconn	SUR.:	PROTECTION ANGLE:

pcc	80%			70%			50%			30%			10%			0	
p _w	50%	30%	10%	50%	30%	10%	50%	30%	10%	50%	30%	10%	50%	30%	10%	0	
p _{fc}	20%			20%			20%			20%			20%			0	
RCR	RCR:Room Cavity Ratio						Wall Exitance Coefficients(WEC)										
0.0																	
1.0	.200	.114	.036	.193	.110	.035	.179	.103	.033	.166	.096	.031	.154	.089	.029		
2.0	.190	.104	.032	.184	.101	.031	.172	.096	.030	.161	.090	.028	.151	.085	.027		
3.0	.180	.096	.029	.175	.094	.028	.164	.089	.027	.155	.085	.026	.146	.081	.025		
4.0	.171	.089	.026	.166	.087	.026	.157	.083	.025	.148	.080	.024	.140	.076	.023		
5.0	.162	.083	.024	.158	.081	.024	.150	.078	.023	.142	.075	.022	.135	.072	.022		
6.0	.154	.077	.022	.150	.076	.022	.143	.073	.021	.136	.071	.021	.130	.069	.020		
7.0	.147	.073	.021	.143	.071	.020	.137	.069	.020	.131	.067	.020	.125	.065	.019		
8.0	.140	.068	.019	.137	.067	.019	.131	.066	.019	.126	.064	.018	.121	.062	.018		
9.0	.134	.065	.018	.131	.064	.018	.126	.062	.018	.121	.061	.017	.116	.059	.017		
10.0	.128	.061	.017	.125	.061	.017	.121	.059	.017	.116	.058	.016	.112	.056	.016		

pcc	80%			70%			50%			30%			10%			0
p _w	50%	30%	10%	50%	30%	10%	50%	30%	10%	50%	30%	10%	50%	30%	10%	0
p _{fc}	20%			20%			20%			20%			20%			0
RCR	RCR:Room Cavity Ratio						Ceiling Cavity Exitance Coefficients(CCEC)									
0.0	.209	.209	.209	.178	.178	.178	.122	.122	.122	.070	.070	.070	.022	.022	.022	
1.0	.191	.176	.161	.164	.151	.139	.112	.104	.096	.064	.060	.056	.021	.019	.018	
2.0	.177	.151	.129	.152	.130	.111	.104	.090	.078	.060	.052	.046	.019	.017	.015	
3.0	.166	.132	.106	.142	.114	.092	.098	.079	.064	.056	.046	.038	.018	.015	.012	
4.0	.156	.118	.089	.134	.102	.077	.092	.071	.054	.053	.042	.032	.017	.014	.011	
5.0	.148	.107	.076	.127	.092	.066	.088	.064	.047	.051	.038	.028	.016	.012	.009	
6.0	.141	.098	.067	.121	.085	.058	.084	.059	.041	.049	.035	.024	.016	.011	.008	
7.0	.135	.090	.059	.116	.078	.052	.080	.055	.037	.047	.032	.022	.015	.011	.007	
8.0	.129	.084	.053	.111	.073	.047	.077	.051	.033	.045	.030	.020	.014	.010	.007	
9.0	.124	.079	.049	.107	.069	.043	.074	.048	.030	.043	.029	.018	.014	.009	.006	
10.0	.119	.075	.045	.103	.065	.040	.071	.046	.028	.042	.027	.017	.014	.009	.006	

C Range: 0 - 360DEG
C Interval: 15.0DEG
Test Speed: HIGH
Temperature:25.3DEG
Operators:ZhangXiao
Test Date:2015-12-07

γ Range: 0 - 180DEG
γ Interval: 1.0DEG
Test System:EVERFINE GO-2000B_V1 SYSTEM V2.0.265
Humidity:65.0%
Test Distance:6.590m [K=1.0000]
Remarks:

Uncorrected UGR Table

Test:U:226.5V I:0.0600A P:10.80W PF:0.7910 Lamp Flux:773.658x1 lm											
NAME:					TYPE:			WEIGHT:			
DIM.:					SPEC.:			SERIAL No.:			
MFR.: Rayconn					SUR.:			PROTECTION ANGLE:			
ceiling/cavity	0.7	0.7	0.5	0.5	0.3	0.7	0.7	0.5	0.5	0.3	
walls	0.5	0.3	0.5	0.3	0.3	0.5	0.3	0.5	0.3	0.3	
working plane	0.2	0.2	0.2	0.2	0.2	0.2	0.2	0.2	0.2	0.2	
Room dimensions		Viewed crosswise					Viewed endwise				
x = 2H y = 2H	2H	23.8	24.8	24.0	25.0	25.2	23.6	24.7	23.9	24.9	25.1
	3H	23.8	24.7	24.1	25.0	25.2	23.7	24.6	24.0	24.9	25.1
	4H	23.8	24.7	24.1	25.0	25.2	23.7	24.6	24.0	24.9	25.1
	6H	23.8	24.7	24.2	25.0	25.3	23.8	24.6	24.1	24.9	25.2
	8H	23.9	24.7	24.2	25.0	25.3	23.8	24.6	24.2	24.9	25.2
	12H	23.9	24.7	24.3	25.0	25.3	23.9	24.7	24.3	25.0	25.3
4H	2H	23.6	24.5	23.9	24.7	25.0	23.5	24.3	23.8	24.6	24.9
	3H	23.7	24.4	24.0	24.7	25.1	23.6	24.3	23.9	24.6	25.0
	4H	23.8	24.5	24.1	24.8	25.2	23.7	24.4	24.1	24.7	25.1
	6H	23.9	24.5	24.3	24.9	25.3	23.9	24.5	24.3	24.8	25.2
	8H	24.0	24.5	24.4	24.9	25.4	24.0	24.5	24.4	24.9	25.3
	12H	24.1	24.6	24.5	25.0	25.5	24.1	24.6	24.5	25.0	25.5
8H	4H	23.7	24.3	24.2	24.7	25.1	23.7	24.2	24.1	24.6	25.0
	6H	23.9	24.4	24.4	24.9	25.3	23.9	24.4	24.4	24.8	25.3
	8H	24.1	24.5	24.6	25.0	25.5	24.1	24.5	24.6	25.0	25.5
	12H	24.3	24.7	24.8	25.2	25.7	24.3	24.7	24.9	25.2	25.7
12H	4H	23.7	24.2	24.2	24.6	25.1	23.6	24.1	24.1	24.6	25.0
	6H	24.0	24.4	24.4	24.8	25.3	23.9	24.3	24.4	24.8	25.3
	8H	24.1	24.5	24.7	25.0	25.5	24.1	24.5	24.7	25.0	25.5
Variations with the observer position at spacings:											
S = 1.0H	+ 2.2 / - 3.9					+ 2.2 / - 3.6					
1.5H	+ 4.4 / - 3.9					+ 4.3 / - 3.6					
2.0H	+ 3.5 / - 0.8					+ 3.3 / - 0.8					

CIE Pub.117 Corrected 773.7 lm Total Lamp Luminous Flux.(8log(F/F0) = -0.9)

C Range: 0 - 360DEG
C Interval: 15.0DEG
Test Speed: HIGH
Temperature:25.3DEG
Operators:ZhangXiao
Test Date:2015-12-07

γ Range: 0 - 180DEG
γ Interval: 1.0DEG
Test System:EVERFINE GO-2000B_V1 SYSTEM V2.0.265
Humidity:65.0%
Test Distance:6.590m [K=1.0000]
Remarks:

UTILIZATION FACTORS TABLE

Test:U:226.5V I:0.0600A P:10.80W PF:0.7910 Lamp Flux:773.658x1 lm		
NAME:	TYPE:	WEIGHT:
DIM.:	SPEC.:	SERIAL No.:
MFR.: Rayconn	SUR.:	PROTECTION ANGLE:

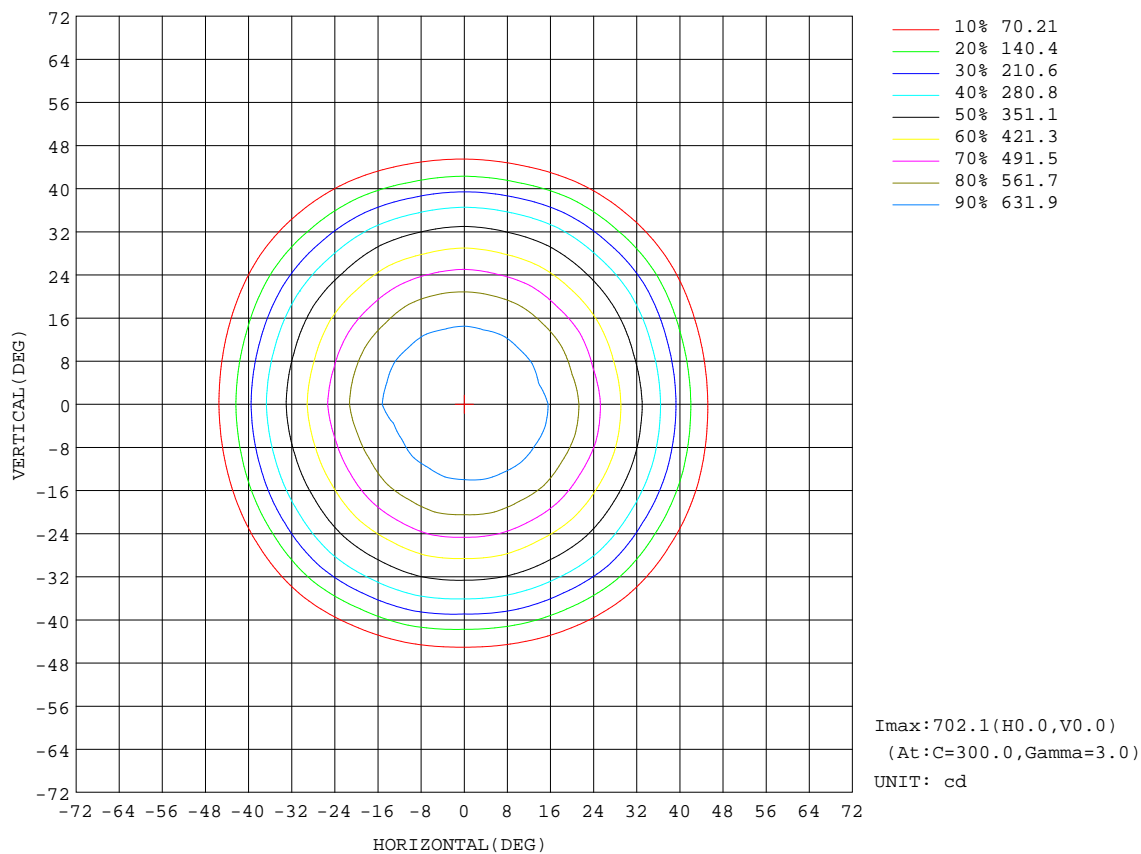
REFLECTANCE										
Ceiling	0.8	0.8	0.8	0.7	0.7	0.7	0.5	0.5	0.5	0
Walls	0.7	0.5	0.3	0.7	0.5	0.3	0.7	0.5	0.3	0
Working plane	0.2	0.2	0.2	0.2	0.2	0.2	0.2	0.2	0.2	0
ROOM INDEX	UTILIZATION FACTORS(PERCENT) $k(RI) \times RCR = 5$									
$k = 0.60$	82	75	70	81	75	70	80	74	70	66
0.80	90	83	79	89	83	79	88	82	78	74
1.00	95	89	84	94	88	84	92	88	83	79
1.25	99	93	89	98	93	89	96	91	88	83
1.50	103	97	93	101	96	93	98	94	91	86
2.00	106	101	97	104	100	96	101	98	95	89
2.50	108	103	100	106	102	99	102	99	97	90
3.00	110	106	102	108	104	101	104	101	99	91
4.00	112	109	106	110	107	104	106	103	101	93
5.00	113	111	108	111	109	107	106	105	103	95
ROOM INDEX	UF(total)									Direct
According to DIN EN 13032-2 2004			Suspended					SHRNOM = 1.25		

C Range: 0 - 360DEG
C Interval: 15.0DEG
Test Speed: HIGH
Temperature:25.3DEG
Operators:ZhangXiao
Test Date:2015-12-07

γ Range: 0 - 180DEG
 γ Interval: 1.0DEG
 γ Test System:EVERFINE GO-2000B_V1 SYSTEM V2.0.265
Humidity:65.0%
Test Distance:6.590m [K=1.0000]
Remarks:

ISOCANDELA DIAGRAM

Test:U:226.5V I:0.0600A P:10.80W PF:0.7910 Lamp Flux:773.658x1 lm		
NAME:	TYPE:	WEIGHT:
DIM.:	SPEC.:	SERIAL No.:
MFR.: Rayconn	SUR.:	PROTECTION ANGLE:



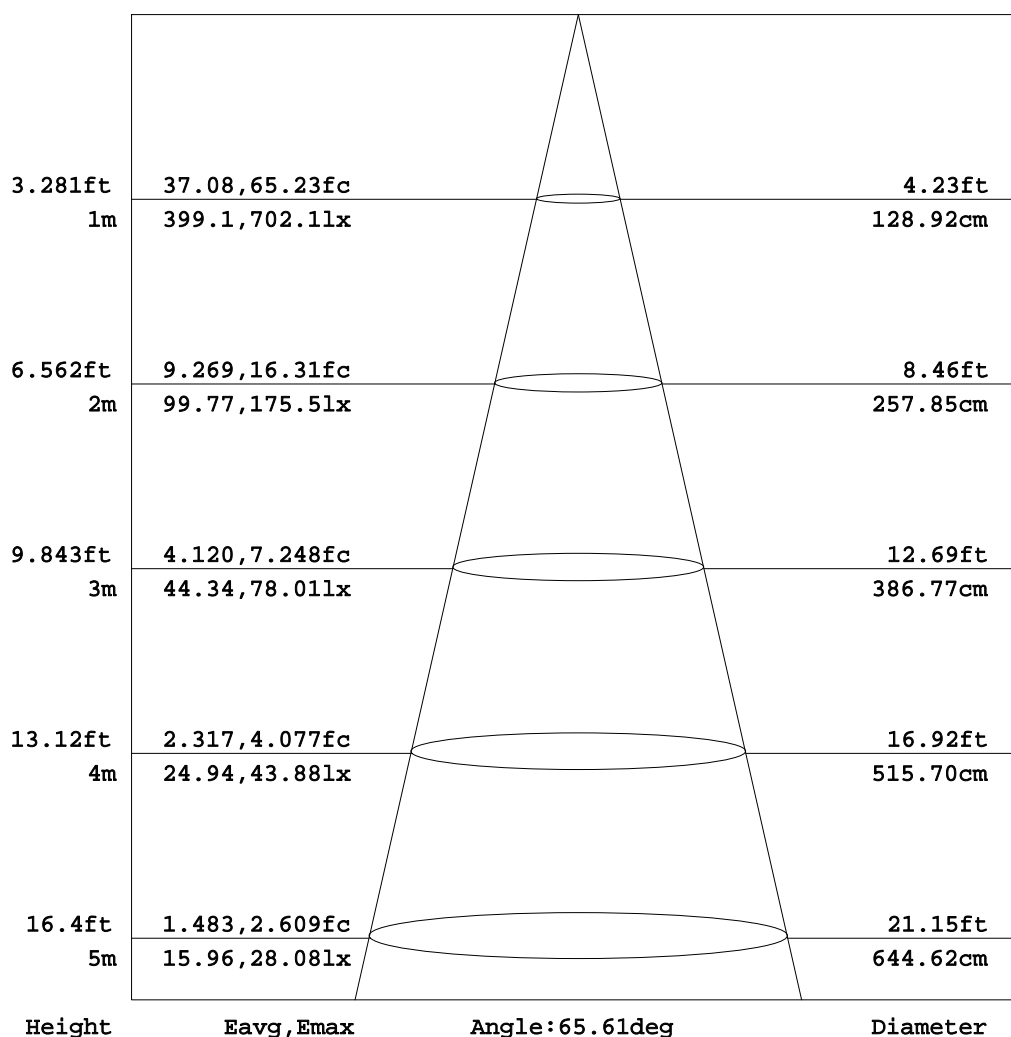
C Range: 0 - 360DEG
C Interval: 15.0DEG
Test Speed: HIGH
Temperature: 25.3DEG
Operators: ZhangXiao
Test Date: 2015-12-07

γ Range: 0 - 180DEG
γ Interval: 1.0DEG
Test System: EVERFINE GO-2000B_V1 SYSTEM V2.0.265
Humidity: 65.0%
Test Distance: 6.590m [K=1.0000]
Remarks:

AAI Figure

Test:U:226.5V I:0.0600A P:10.80W PF:0.7910 Lamp Flux:773.658x1 lm		
NAME:	TYPE:	WEIGHT:
DIM.:	SPEC.:	SERIAL No.:
MFR.: Rayconn	SUR.:	PROTECTION ANGLE:

Flux out:528.7 lm



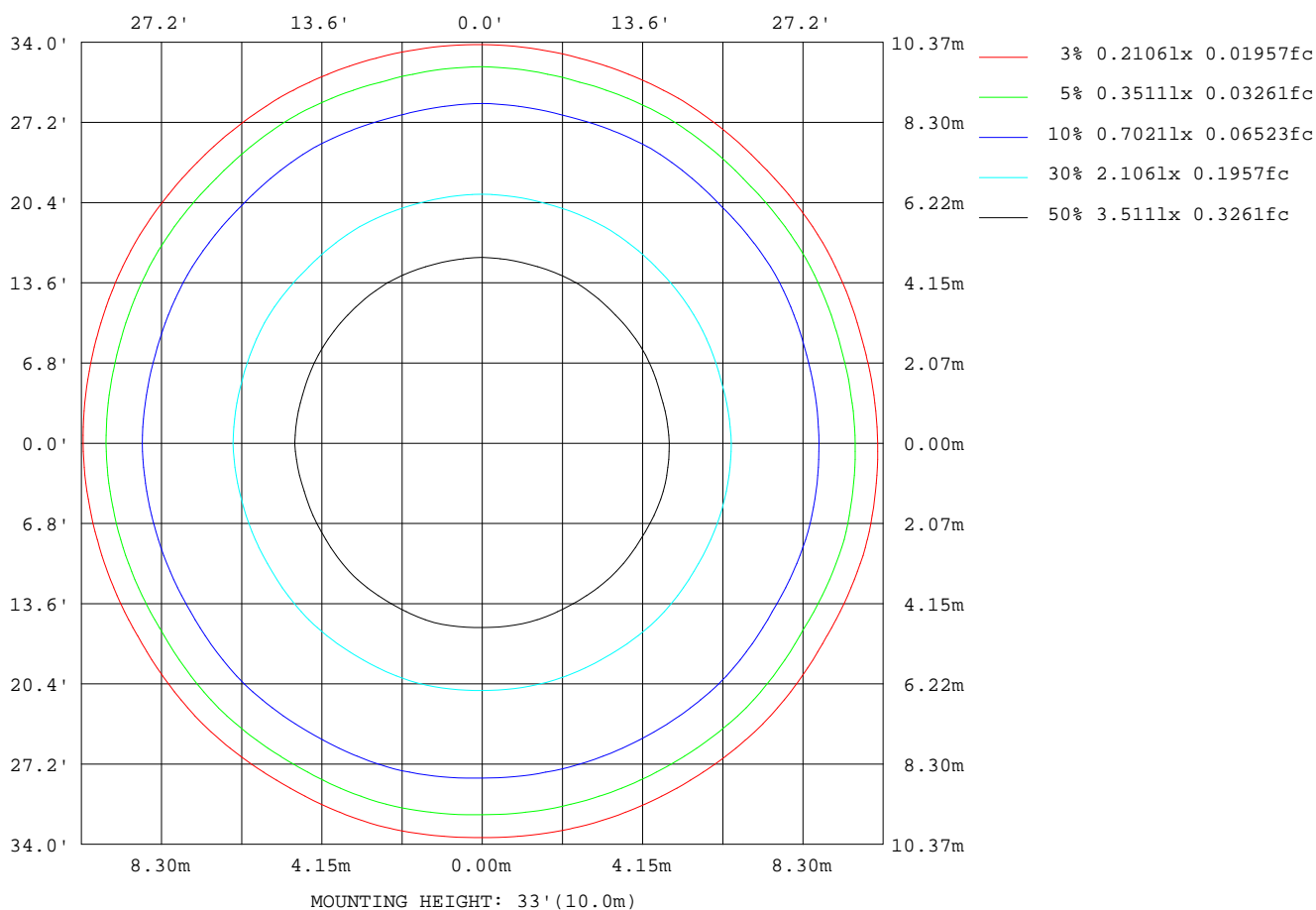
Note: The Curves indicate the illuminated area and the average illumination when the luminaire is at different distance.

C Range: 0 - 360DEG
C Interval: 15.0DEG
Test Speed: HIGH
Temperature: 25.3DEG
Operators: ZhangXiao
Test Date: 2015-12-07

γ Range: 0 - 180DEG
γ Interval: 1.0DEG
Test System: EVERFINE GO-2000B_V1 SYSTEM V2.0.265
Humidity: 65.0%
Test Distance: 6.590m [K=1.0000]
Remarks:

ISOLUX DIAGRAM

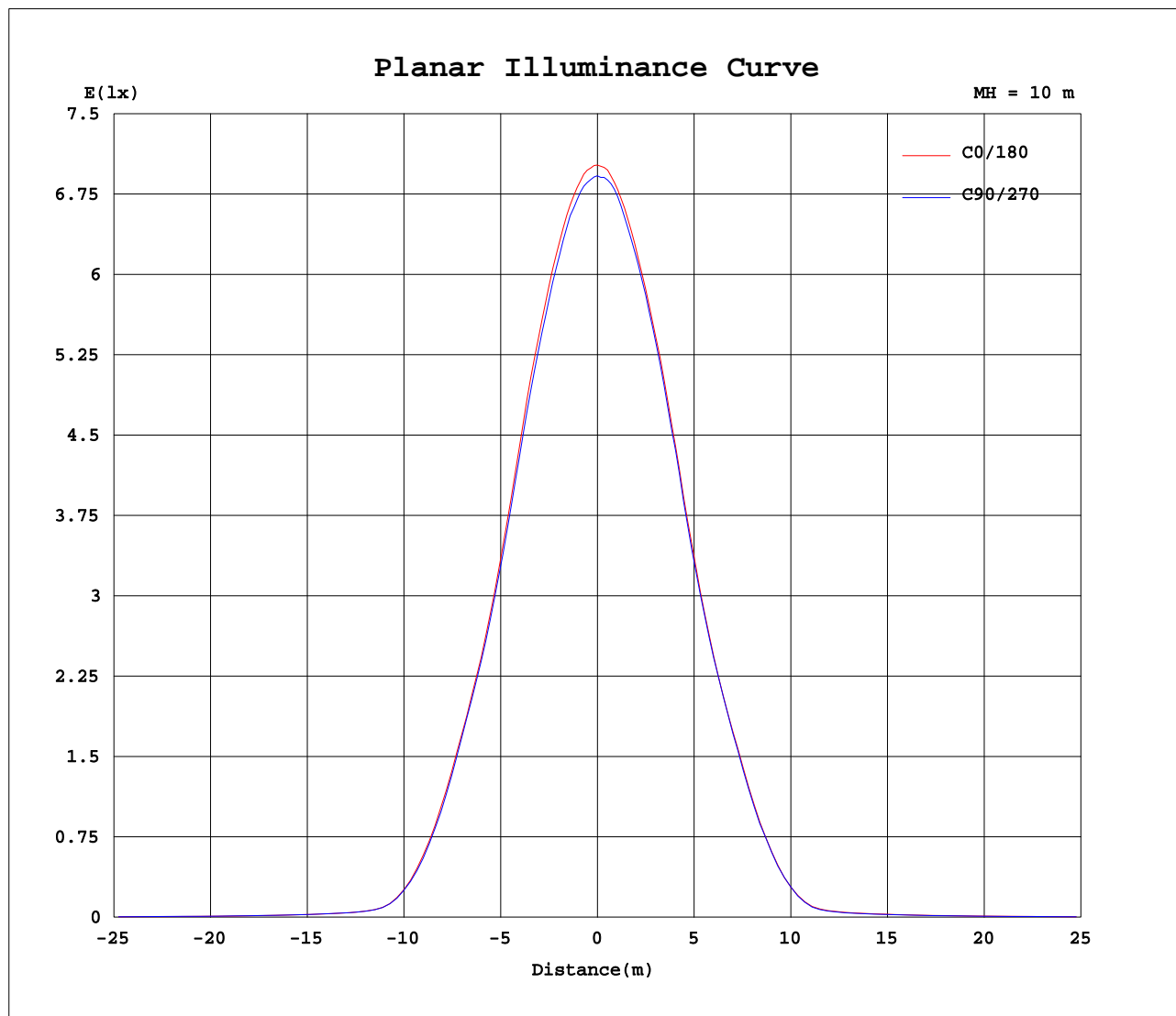
Test:U:226.5V I:0.0600A P:10.80W PF:0.7910 Lamp Flux:773.658x1 lm		
NAME:	TYPE:	WEIGHT:
DIM.:	SPEC.:	SERIAL No.:
MFR.: Rayconn	SUR.:	PROTECTION ANGLE:



C Range: 0 - 360DEG
C Interval: 15.0DEG
Test Speed: HIGH
Temperature: 25.3DEG
Operators: ZhangXiao
Test Date: 2015-12-07

γ Range: 0 - 180DEG
γ Interval: 1.0DEG
Test System: EVERFINE GO-2000B_V1 SYSTEM V2.0.265
Humidity: 65.0%
Test Distance: 6.590m [K=1.0000]
Remarks:

Planar Illuminance Curve



C Range: 0 - 360DEG
C Interval: 15.0DEG
Test Speed: HIGH
Temperature: 25.3DEG
Operators: ZhangXiao
Test Date: 2015-12-07

γ Range: 0 - 180DEG
 γ Interval: 1.0DEG
Test System: EVERFINE GO-2000B_V1 SYSTEM V2.0.265
Humidity: 65.0%
Test Distance: 6.590m [K=1.0000]
Remarks:

LUMINOUS DISTRIBUTION INTENSITY DATA

Test:U:226.5V I:0.0600A P:10.80W PF:0.7910 Lamp Flux:773.658x1 lm																			
NAME:										TYPE:					WEIGHT:				
DIM.:										SPEC.:					SERIAL No.:				
MFR.: Rayconn										SUR.:					PROTECTION ANGLE:				

Table--1

UNIT: cd

C(DEG) γ (DEG)	0	15	30	45	60	75	90	105	120	135	150	165	180	195	210	225	240	255	270
0	694	694	694	694	694	694	694	694	694	694	694	694	694	694	694	694	694	694	694
5	687	688	687	688	688	687	686	686	684	684	683	685	686	686	687	688	689	689	689
10	666	665	665	666	665	665	663	663	660	660	659	660	662	661	665	663	663	664	663
15	629	632	630	630	627	627	624	625	622	624	623	625	626	626	629	627	630	626	629
20	576	576	572	574	570	573	570	573	569	572	568	572	574	573	575	573	576	576	575
25	490	492	487	489	486	488	487	492	488	489	486	489	491	488	491	488	491	491	493
30	399	403	397	402	397	400	398	404	399	402	396	400	402	397	400	401	406	400	404
35	308	310	307	312	306	310	307	313	310	313	308	312	312	308	309	308	313	311	313
40	188	189	186	191	185	188	185	194	192	197	193	195	196	193	195	192	197	194	195
45	72.3	75.3	71.6	75.0	74.2	73.0	71.7	74.8	72.9	75.0	72.7	76.1	78.5	78.2	80.9	78.4	82.1	78.7	80.2
50	22.0	22.6	22.2	22.4	22.5	22.7	22.2	22.1	21.8	22.4	22.9	23.3	23.3	23.4	23.7	23.5	23.6	22.4	22.0
55	15.8	16.0	16.0	16.1	16.1	16.3	16.2	16.3	16.3	16.6	16.8	17.0	17.0	17.0	17.1	16.8	16.7	16.1	15.9
60	12.9	13.1	13.0	13.2	13.1	13.3	13.3	13.5	13.5	13.7	13.8	14.0	14.0	14.0	14.0	13.8	13.6	13.2	13.1
65	10.4	10.6	10.5	10.7	10.7	10.9	10.9	11.1	11.2	11.4	11.4	11.6	11.6	11.5	11.5	11.3	11.2	10.8	10.8
70	8.30	8.44	8.41	8.55	8.56	8.73	8.81	9.04	9.12	9.25	9.31	9.45	9.50	9.44	9.45	9.23	9.11	8.94	8.85
75	6.38	6.48	6.46	6.55	6.62	6.77	6.89	7.07	7.17	7.35	7.35	7.44	7.49	7.46	7.54	7.39	7.35	7.13	7.04
80	4.65	4.70	4.69	4.78	5.19	4.95	5.03	5.26	5.33	5.46	5.67	5.46	5.53	5.51	5.64	5.62	5.87	5.46	5.35
85	3.32	3.36	3.33	3.36	3.52	3.49	3.59	3.79	3.85	3.96	4.08	3.86	3.98	4.00	4.15	4.19	4.39	4.14	4.02
90	1.22	1.22	1.23	1.22	1.35	1.24	1.24	1.24	1.24	1.24	1.40	1.22	1.40	1.41	1.40	1.40	1.53	1.43	1.42
95	1.30	1.32	1.30	1.31	1.36	1.33	1.30	1.32	1.30	1.33	1.41	1.31	1.52	1.50	1.52	1.50	1.58	1.53	1.53
100	1.44	1.46	1.44	1.46	1.48	1.47	1.45	1.46	1.45	1.47	1.49	1.45	1.68	1.66	1.68	1.67	1.72	1.70	1.69
105	1.64	1.64	1.63	1.64	1.67	1.65	1.63	1.65	1.63	1.66	1.67	1.63	1.88	1.87	1.88	1.86	1.91	1.90	1.89
110	1.86	1.87	1.86	1.87	1.88	1.88	1.87	1.88	1.87	1.89	1.88	1.86	2.13	2.13	2.12	2.12	2.15	2.15	2.14
115	2.15	2.16	2.15	2.16	2.16	2.17	2.16	2.16	2.16	2.18	2.16	2.14	2.42	2.40	2.41	2.40	2.43	2.43	2.42
120	2.48	2.49	2.48	2.49	2.49	2.50	2.49	2.49	2.49	2.50	2.49	2.48	2.74	2.73	2.73	2.74	2.75	2.75	2.74
125	2.85	2.86	2.86	2.86	2.87	2.87	2.86	2.87	2.86	2.88	2.87	2.85	3.11	3.10	3.10	3.09	3.11	3.12	3.11
130	3.27	3.28	3.27	3.28	3.28	3.28	3.28	3.28	3.28	3.29	3.29	3.26	3.49	3.47	3.48	3.47	3.49	3.50	3.48
135	3.70	3.71	3.70	3.71	3.71	3.72	3.71	3.71	3.71	3.72	3.71	3.69	3.88	3.87	3.87	3.87	3.89	3.89	3.88
140	4.12	4.12	4.12	4.13	4.13	4.14	4.13	4.14	4.13	4.14	4.13	4.12	4.26	4.25	4.26	4.24	4.26	4.26	4.26
145	4.49	4.49	4.48	4.50	4.49	4.50	4.49	4.49	4.49	4.50	4.49	4.48	4.59	4.58	4.58	4.58	4.60	4.59	4.59
150	4.76	4.78	4.77	4.78	4.77	4.78	4.76	4.77	4.77	4.78	4.77	4.77	4.86	4.84	4.86	4.84	4.87	4.86	4.86
155	5.01	5.02	5.01	5.03	5.01	5.02	5.01	5.02	5.01	5.02	5.01	5.01	5.10	5.08	5.09	5.08	5.10	5.09	5.09
160	5.25	5.26	5.25	5.26	5.25	5.26	5.24	5.25	5.25	5.25	5.24	5.25	5.33	5.31	5.33	5.32	5.33	5.32	5.32
165	5.47	5.49	5.47	5.49	5.47	5.49	5.47	5.48	5.47	5.48	5.46	5.47	5.54	5.52	5.54	5.52	5.53	5.52	5.54
170	5.67	5.69	5.68	5.69	5.67	5.69	5.68	5.69	5.67	5.68	5.67	5.68	5.72	5.70	5.72	5.70	5.72	5.70	5.72
175	5.84	5.86	5.84	5.86	5.84	5.86	5.84	5.85	5.84	5.86	5.85	5.85	5.88	5.85	5.87	5.84	5.87	5.85	5.87
180	5.94	5.95	5.94	5.95	5.94	5.95	5.94	5.95	5.95	5.95	5.94	5.95	5.96	5.94	5.96	5.94	5.95	5.94	5.95

C Range: 0 - 360DEG
C Interval: 15.0DEG
Test Speed: HIGH
Temperature:25.3DEG
Operators:ZhangXiao
Test Date:2015-12-07

γ Range: 0 - 180DEG
γ Interval: 1.0DEG
Test System:EVERFINE GO-2000B_V1 SYSTEM V2.0.265
Humidity:65.0%
Test Distance:6.590m [K=1.0000]
Remarks:

LUMINOUS DISTRIBUTION INTENSITY DATA

Test:U:226.5V I:0.0600A P:10.80W PF:0.7910 Lamp Flux:773.658x1 lm					
NAME:			TYPE:		WEIGHT:
DIM.:			SPEC.:		SERIAL No.:
MFR.: Rayconn			SUR.:		PROTECTION ANGLE:

Table--2

UNIT: cd

C(DEG) γ (DEG)	285	300	315	330	345														
0	694	694	694	694	694														
5	687	688	687	687	686														
10	664	667	666	667	667														
15	628	631	630	633	630														
20	575	578	575	577	575														
25	490	494	490	495	490														
30	401	405	400	404	401														
35	312	313	309	312	308														
40	194	197	192	196	191														
45	75.5	76.5	72.2	72.8	71.3														
50	21.5	22.0	21.7	22.0	21.7														
55	15.7	15.8	15.6	15.7	15.6														
60	12.9	13.0	12.8	12.9	12.8														
65	10.6	10.6	10.5	10.5	10.4														
70	8.68	8.61	8.46	8.45	8.35														
75	6.87	6.78	6.61	6.60	6.48														
80	5.18	5.12	4.95	5.05	4.80														
85	3.83	3.73	3.61	3.73	3.51														
90	1.42	1.41	1.44	1.55	1.42														
95	1.52	1.53	1.52	1.60	1.52														
100	1.68	1.69	1.68	1.72	1.68														
105	1.88	1.89	1.88	1.90	1.87														
110	2.13	2.13	2.13	2.14	2.13														
115	2.41	2.42	2.42	2.43	2.42														
120	2.74	2.75	2.75	2.75	2.74														
125	3.10	3.11	3.10	3.11	3.10														
130	3.48	3.48	3.48	3.49	3.49														
135	3.87	3.88	3.88	3.88	3.87														
140	4.25	4.26	4.26	4.26	4.26														
145	4.58	4.59	4.59	4.59	4.58														
150	4.86	4.86	4.85	4.86	4.85														
155	5.08	5.09	5.09	5.09	5.09														
160	5.31	5.32	5.32	5.32	5.32														
165	5.53	5.54	5.53	5.54	5.53														
170	5.71	5.72	5.71	5.73	5.71														
175	5.85	5.87	5.86	5.87	5.86														
180	5.95	5.95	5.94	5.95	5.94														

C Range: 0 - 360DEG
C Interval: 15.0DEG
Test Speed: HIGH
Temperature:25.3DEG
Operators:ZhangXiao
Test Date:2015-12-07

γ Range: 0 - 180DEG
γ Interval: 1.0DEG
Test System:EVERFINE GO-2000B_V1 SYSTEM V2.0.265
Humidity:65.0%
Test Distance:6.590m [K=1.0000]
Remarks: